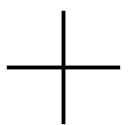
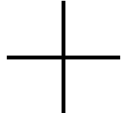


正样
2023.09.26
B00

Copyright: Copyright infringement reserved.



INOVANCE

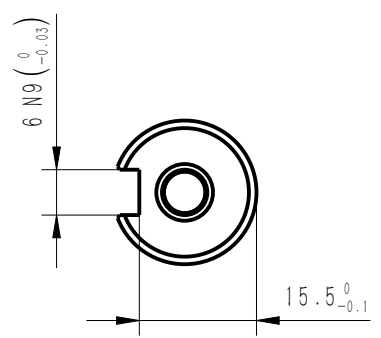
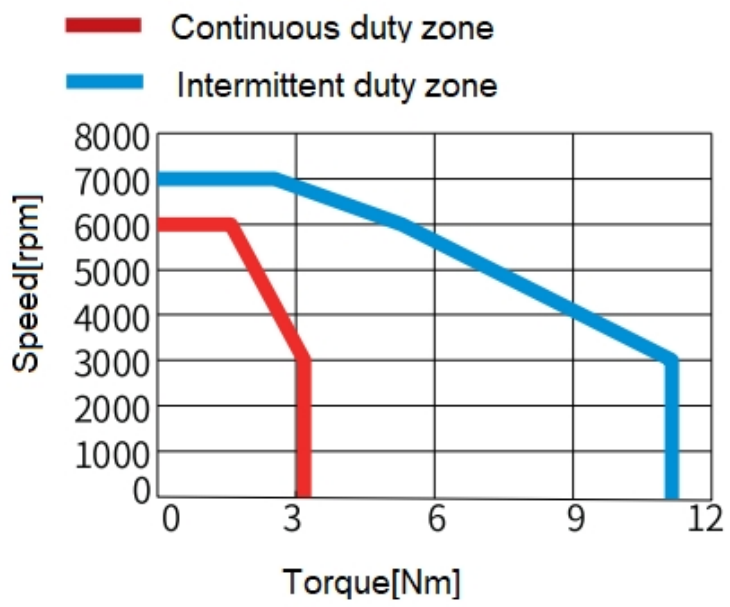
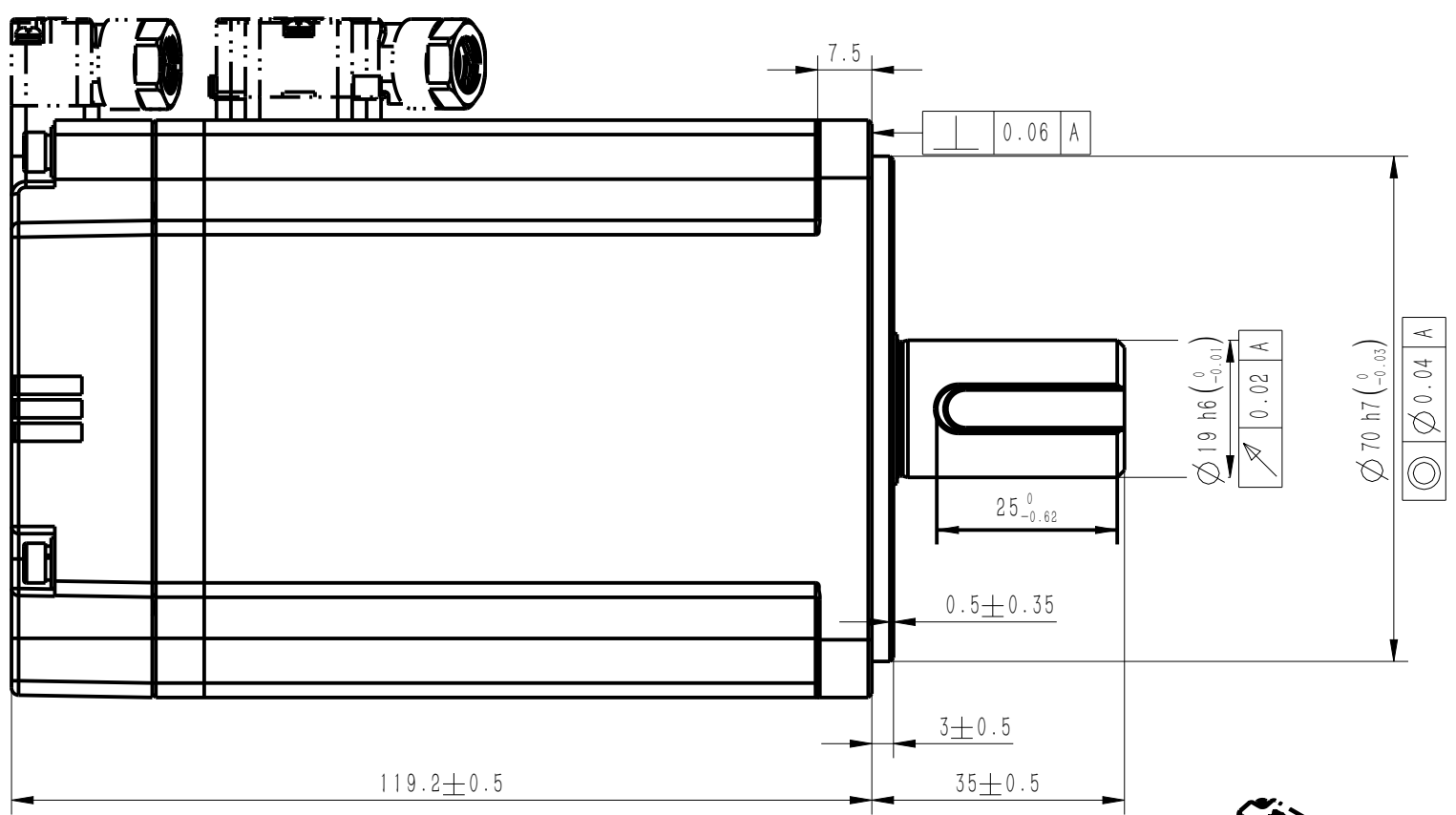
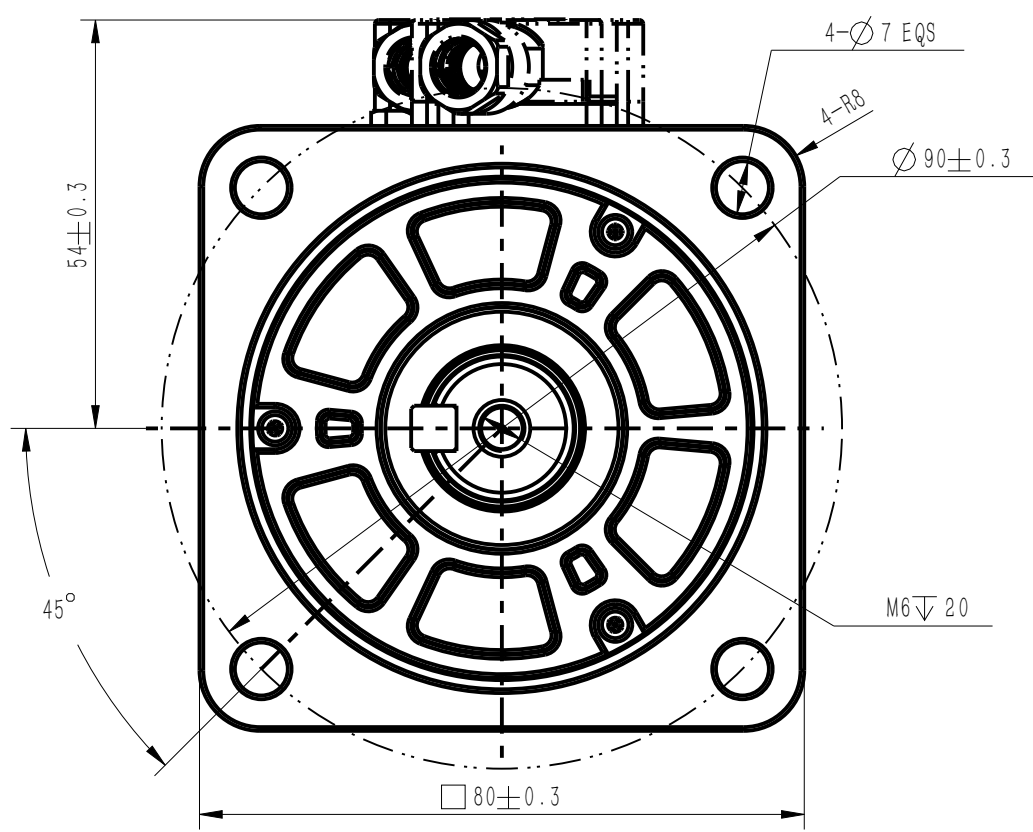
E

F

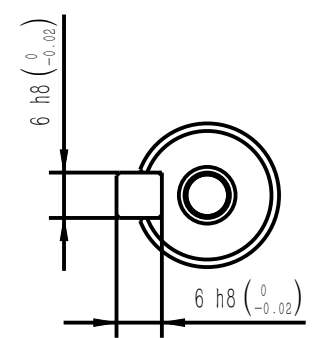
A3

| Amendment | Description |
|-----------|-------------|
| | |

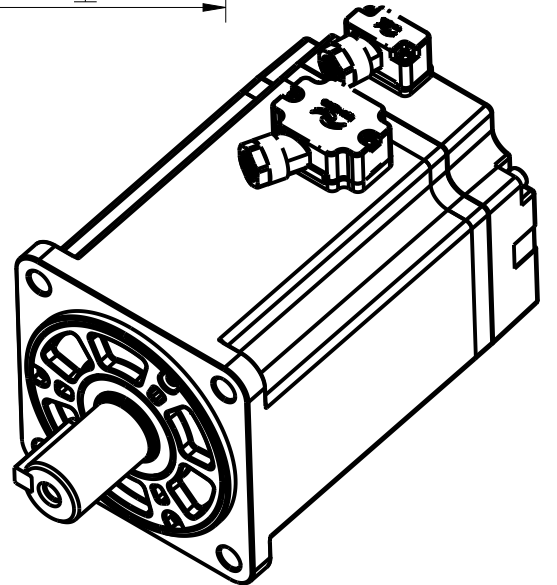
Unit: Millimeter (mm)



Dimension of shaft end



Dimension of shaft end with key



| Basic function parameters | |
|-------------------------------|-------|
| Rated power KW | 1 |
| Rated voltage V | 220 |
| Rated current A | ≤ 6.5 |
| Peak current at rated speed A | ≤ 24 |
| Rated torque Nm | 3.18 |
| Peak torque at rated speed Nm | 11.1 |
| Rated speed rpm | 3000 |
| Max speed rpm | 7000 |
| Rotor inertia kg·cm2 | 1.87 |
| Encoder resolution | 26bit |
| Insulation class | F |
| Protection level | IP67 |
| Static torque of brake Nm | / |
| Brake power supply | / |
| Duty cycle | S1 |
| Radial line load N | ≤ 392 |
| Axial load N | ≤ 147 |

| | | | | | | | | |
|-----------------|---------------|------------|----------|-----------------------|-------|---------|-------------|-------------------------|
| | | | | Motor Outline Drawing | | | 01118371-WX | |
| | | | | | | | | |
| B00 | New Archive | / | 20230901 | | | | | |
| Version | Change method | Changed by | Date | <div></div> | | | Mark | <div>INOVANCE</div> |
| Design | / | | | | | | <div></div> | |
| Check | / | | | | | | | |
| Craft | / | | | | | | | |
| Verify | / | | | Weight | Scale | Version | Page 1 of 1 | |
| Standardization | / | | | 2.61 kg | 1:1 | B00 | Model | MS1H1-10C30CB-S631R-INT |
| Approve | / | | | | | | | |